

# Subsea Shear

## Applications

Underwater  
Pipe Cutting

Onshore/Drydock  
Pipe Cutting

Offshore Platform  
Decommissioning

## Features

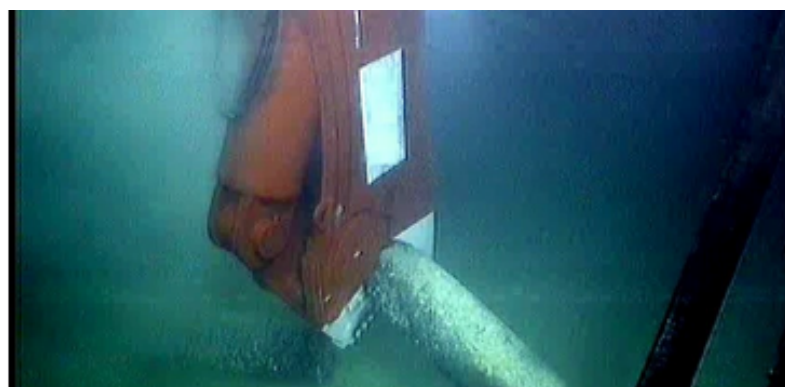
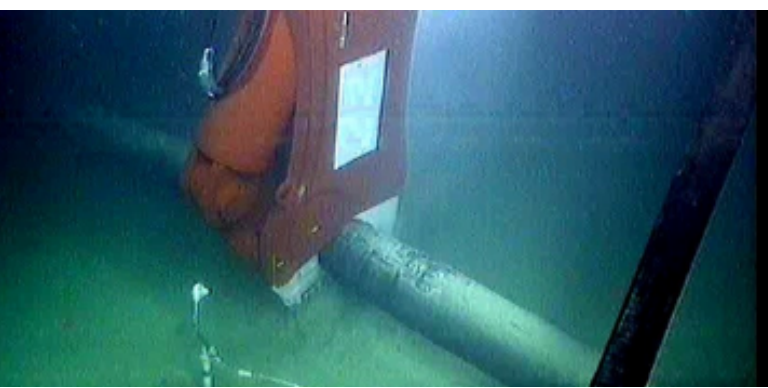
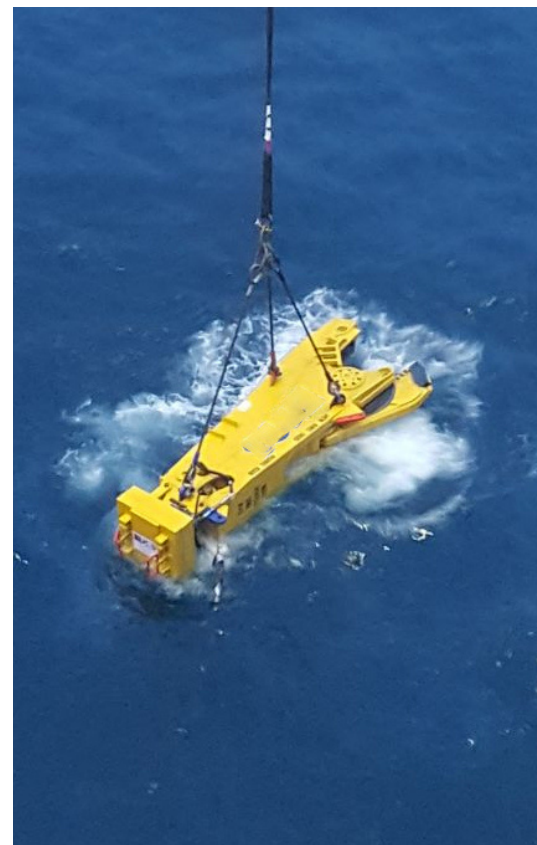
Certified Pad Eyes For Multi Position  
Cable Hanging

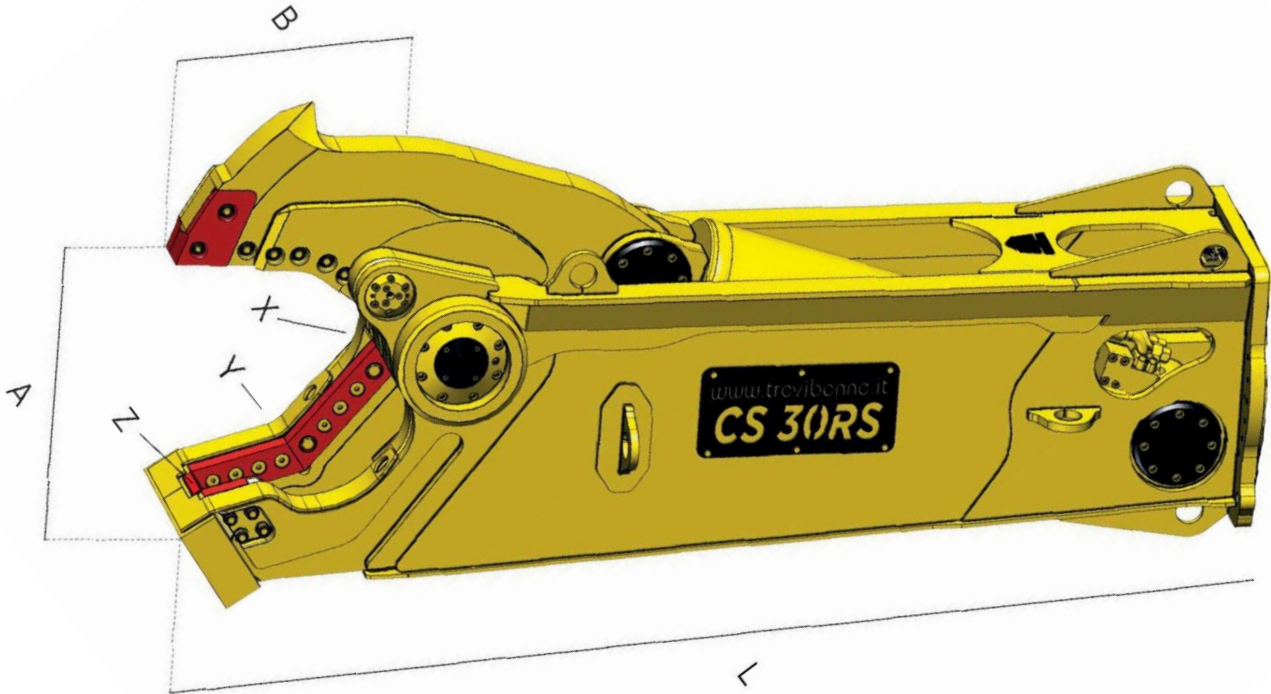
Special Chrome Surface Treatment On  
Cylinder

Anti Corrosion Primer & Paint Treatment

Can Be Operated Directly From Vessel or  
ROV (Dependant On Depth)

Pressure Tested To All Depths





## Technical Specification



	Model	CS12	CS20	CS30	CS40	CS50	CS55	CS70	CS100	CS160	CS200
L - Total Length	mm	1950	2301	2520	2980	3190	3495	3685	3910	4990	TBC
A - Jaw Opening	mm	475	535	615	660	725	780	845	930	1100	1180
B - Jaw Depth	mm	385	445	545	610	675	690	710	960	1080	1130
X - Throat Force	t	267	307	620	676	794	785	937	1186	1688	1736
Z - Tip Closing Force	t	68	74	142	176	173	177	232	296	370	396
Max Working pressure	bar	350	350	350	350	350	350	350	350	350	350
Weight	kg	910	1615	2620	3435	4195	5315	6535	9110	16310	TBC
Pipe Spec	Inch	8	10	14	16	18	24	26	28	32	38
Pipe Spec	mm	203	254	355	406	457	610	660	711	813	965

Pipe dimensions shown include schedule 40 mild steel pipe only.  
Other materials and various wall thickness will effect these figures.



# Subsea Shear



## Get In Touch

### **ECY Haulmark Limited**

Barley Castle Lane, Appleton Thorn, Warrington, Cheshire, WA4 4RB

Tel: +44 (0)1925 269900

Email: [sales@ecyhaulmark.co.uk](mailto:sales@ecyhaulmark.co.uk)

Website: [www.ecyhaulmark.co.uk](http://www.ecyhaulmark.co.uk)

Company Registration Number: 01344471

VAT Number: GB305109794