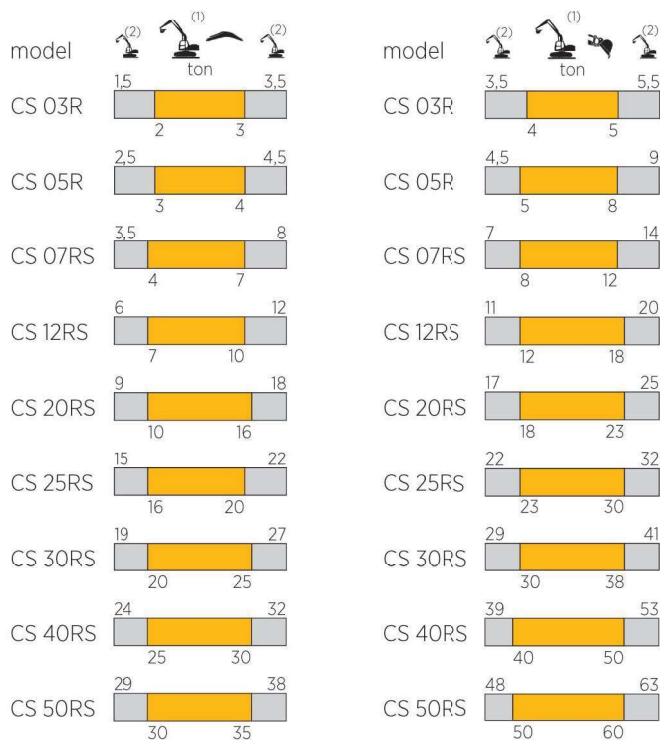
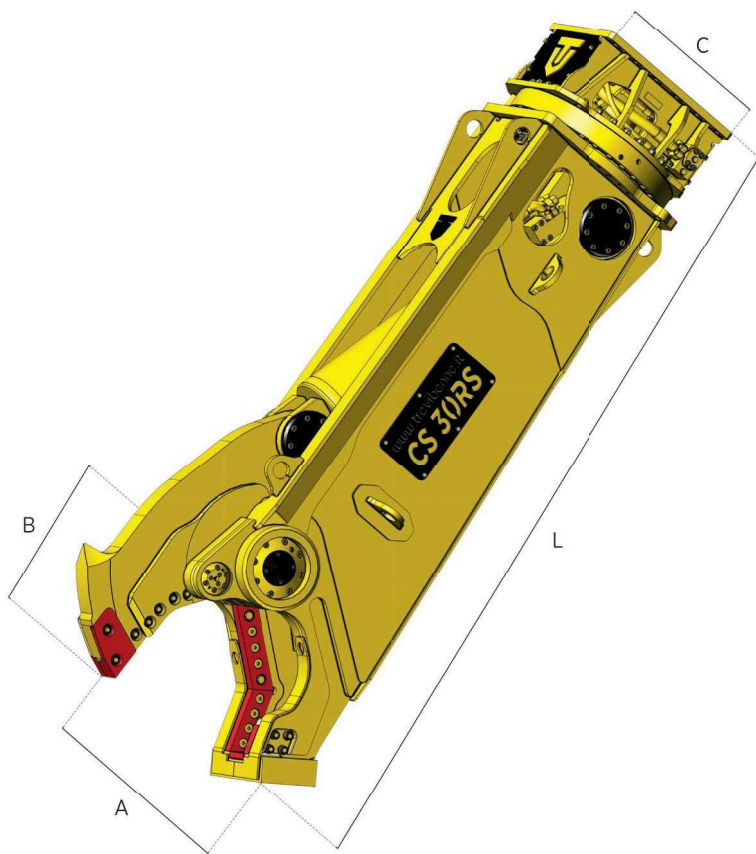




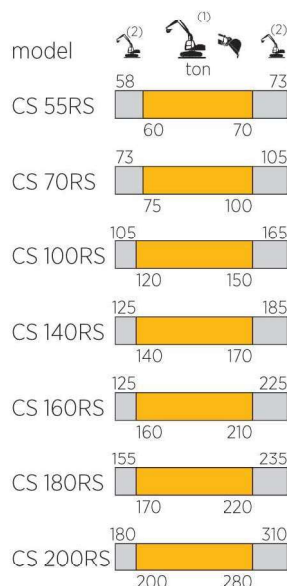
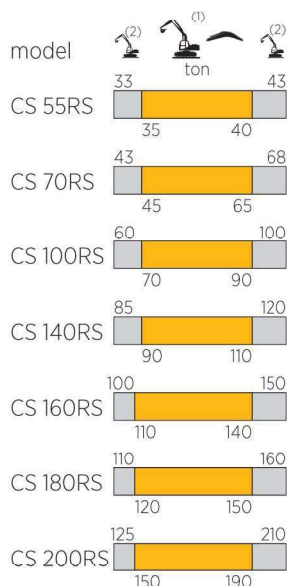
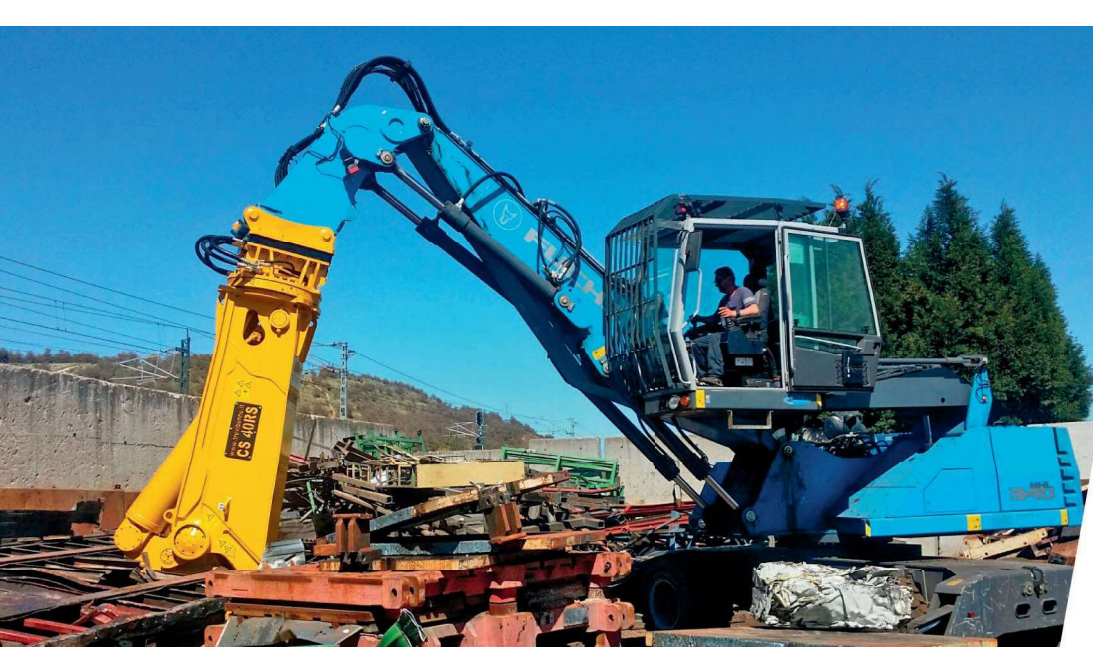
CS SERIES

- MARILYN SHEAR
- CESCOIA MARILYN
- CISAILLE MARILYN
- CIZALLA PARA HIERRO MARILYN
- METALLSCHERE MARILYN



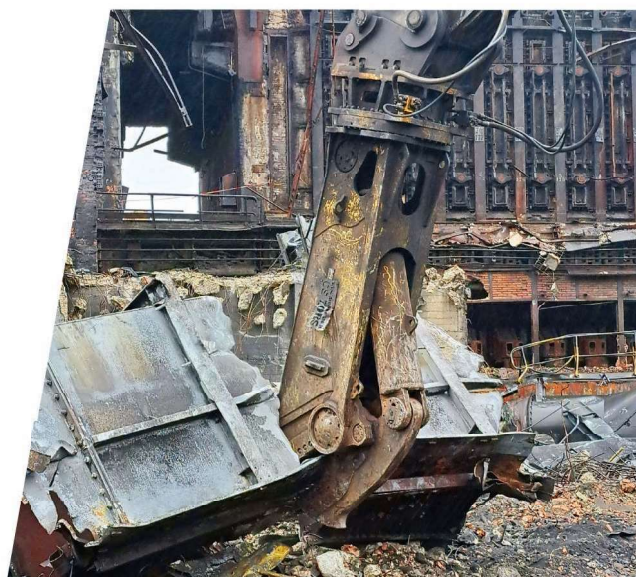
	CS 03R	CS 05R	CS 07RS	CS 12RS	CS 20RS	CS 25RS	CS 30RS	CS 40RS	CS 50RS
kg.	300	465	880	1180	2050	2650	3000	4030	4800
kg.	230	360	630	930	1650	2250	2600	3440	4210
A	265	335	405	465	530	595	620	560	725
B	230	320	370	385	445	505	545	610	675
C	380	460	570	570	715	715	715	865	865
L	1330	1725	2180	2300	2660	2950	3130	3420	3660
max	280	320	320	350	350	350	350	350	350
l/min.	80 / 100	80 / 150	100 / 150	150 / 250	180 / 250	200 / 300	200 / 300	300 / 400	350 / 450
max	120	140	140	140	140	140	140	140	140
l/min.	5	5	5	15 / 30**	20 / 40**	25 / 50**	25 / 50**	25 / 50**	25 / 50**
	/	/	/	/	/	/	/	/	√

* Model weight without rotation / * Peso modello senza rotazione / * Poids du modèle sans rotation / * Peso del modelo sin rotación / * Modellgewicht ohne Drehung
 **Double motor / **Doppio motore / **Double moteur / **Doble motor / **Doppelmotor



(1) Optimum excavator-equipment combination
 Accoppiamento escavatore-attrezzatura ottimale
 Coupelage pelle-équipement optimal
 Acoplamiento excavadora-implemento optimal
 Optimale Bagger-Ausrüstung Kombination

(2) Possible excavator-equipment combination
 Accoppiamento escavatore-attrezzatura possibile
 Coupelage pelle-équipement possible
 Acoplamiento excavadora-implemento posible
 Mögliche Bagger-Ausrüstung Kombination



		CS 55RS	CS 70RS	CS 100RS	CS 140RS	CS 160RS	CS 180RS	CS 200RS
	kg.	6200	7900	10600	14200	16700	17900	19500
		5200	6510	8480	12080	14110	14690	16290
A	mm.	795	845	930	1080	1100	1100	1180
B	mm.	690	710	960	1015	1080	1080	1130
C	mm.	1000	1100	1400	1400	1325	1325	1750
L	mm.	3905	4190	4430	5140	5440	5565	5580
	bar	350	350	350	350	350	350	350
	l/min.	400 / 500	450 / 600	500 / 800	500 / 800	800 / 1000	800 / 1000	900 / 1200
	bar	140	140	140	140	250	250	250
	l/min.	25 / 50**	70**	80**	80**	80**	80**	80**
		✓	✓	✓	✓	✓	✓	✓



* Model weight without rotation / * Peso modello senza rotazione / * Poids du modèle sans rotation / * Peso del modelo sin rotación / * Modellgewicht ohne Drehung
 **Double motor / **Doppio motore / **Double moteur / **Doble motor / **Doppelmotor