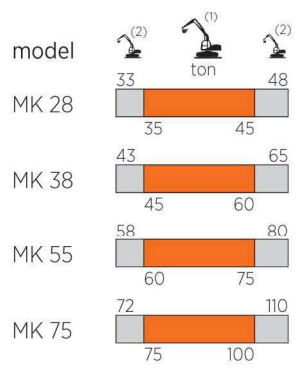
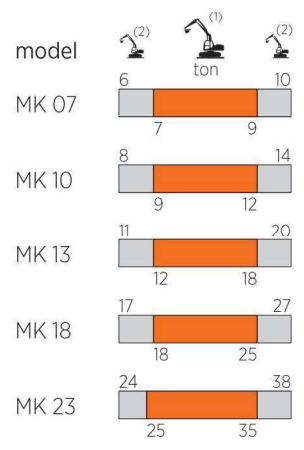




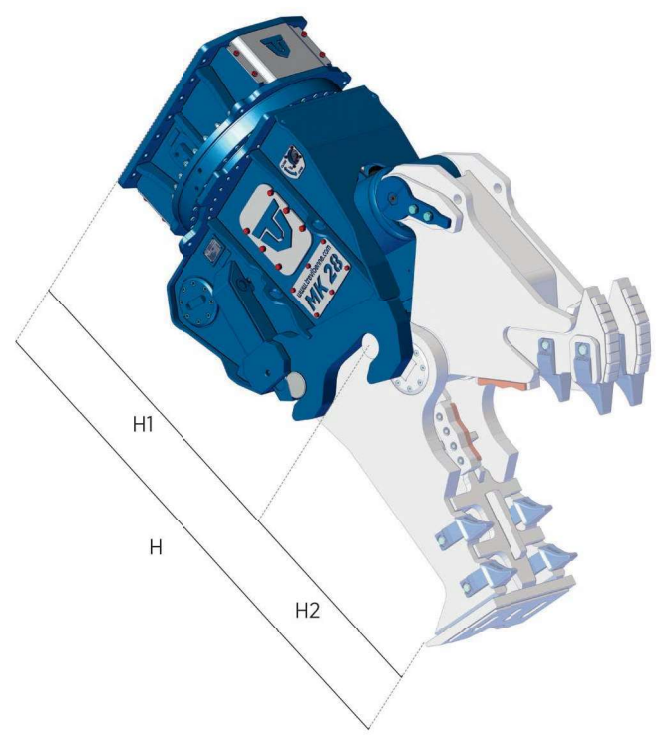
MK SERIES

- MULTI KIT PULVERIZER
- FRANTUMATORE MULTI KIT
- BROYEUR MULTI KIT
- DEMOLEDOR MULTI KIT
- MULTIPROZESSOREN



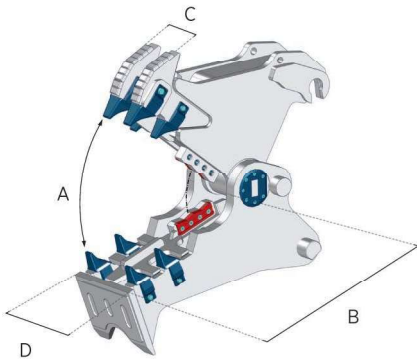
Orange bar: (1) Optimum excavator-equipment combination
 Accoppiamento escavatore-attrezzatura ottimale
 Couplage pelle-équipement optimal
 Acoplamiento excavadora-implemento optimal
 Optimale Bagger-Ausrüstung Kombination

Grey bar: (2) Possible excavator-equipment combination
 Accoppiamento escavatore-attrezzatura possibile
 Couplage pelle-équipement possible
 Acoplamiento excavadora-implemento posible
 Mögliche Bagger-Ausrüstung Kombination



		MK 07 *	MK 10 *	MK 13 *	MK 18	MK 23	MK 28	MK 38	MK 55	MK 75
body	kg.	410	570	795	1225	1465	2020	2180	3550	4920
H1	mm.	810	1000	1055	1220	1330	1375	1375	1580	1710
max	bar	320	320	350	350	350	350	350	350	350
max	l/min.	80 / 100	150 / 200	180 / 250	180 / 250	200 / 300	250 / 350	300 / 400	400 / 500	400 / 500
max	bar	140	140	140	140	140	140	140	140	140
max	l/min.	5	15 / 30**	15 / 30**	20 / 40**	20 / 40**	25 / 50**	25 / 50**	25 / 50**	70**
		/	/	/	/	/	/	/	✓	✓

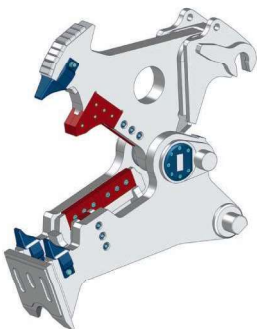
*Mechanical version / *Versione meccanica / *Version mécanique / *Versión mecánica / *Mechanischer Version
 **Double motor / **Doppio motore / **Double moteur / **Doble motor / **Doppelmotor
 H = H1 + H2

KIT FR


		MK 07	MK 10	MK 13	MK 18	MK 23	MK 28	MK 38	MK 55	MK 75
	kg.	250	410	635	740	1090	1555	2015	3200	4055
A	mm.	530	660	720	720	830	840	950	1045	1200
B	mm.	510	610	630	685	795	810	915	1135	1285
C	mm.	175	195	235	240	295	340	380	500	510
D	mm.	305	355	390	400	430	510	570	680	700
	mm.	140	140	180	220	260	260	260	260	325
H2	mm.	660	760	870	885	1035	1100	1225	1640	1465
	∅ max	mm.	20	25	30	35	40	45	60	75
	IPN max	mm.	/	/	/	/	/	/	/	/
	HEA max	mm.	/	/	/	/	/	/	/	/
	max	mm.	/	/	/	/	/	/	/	/

KIT CS


		MK 07	MK 10	MK 13	MK 18	MK 23	MK 28	MK 38	MK 55	MK 75
	kg.	210	360	500	645	1005	1440	1640	2430	3330
A	mm.	250	320	390	435	485	575	580	585	700
B	mm.	325	390	470	485	535	570	580	740	890
C	mm.	65	75	75	95	120	125	125	135	165
D	mm.	250	300	320	330	390	440	440	500	550
	mm.	310	370	450	470	510	565	565	660	730
H2	mm.	545	630	745	770	875	960	990	1145	1060
	∅ max	mm.	30	35	40	50	60	65	90	110
	IPN max	mm.	80	120	140	210	360	400	500	600
	HEA max	mm.	/	100	120	140	230	250	300	400
	max	mm.	/	/	/	/	/	/	/	/

UPDATED
UPDATED
UPDATED
KIT CB


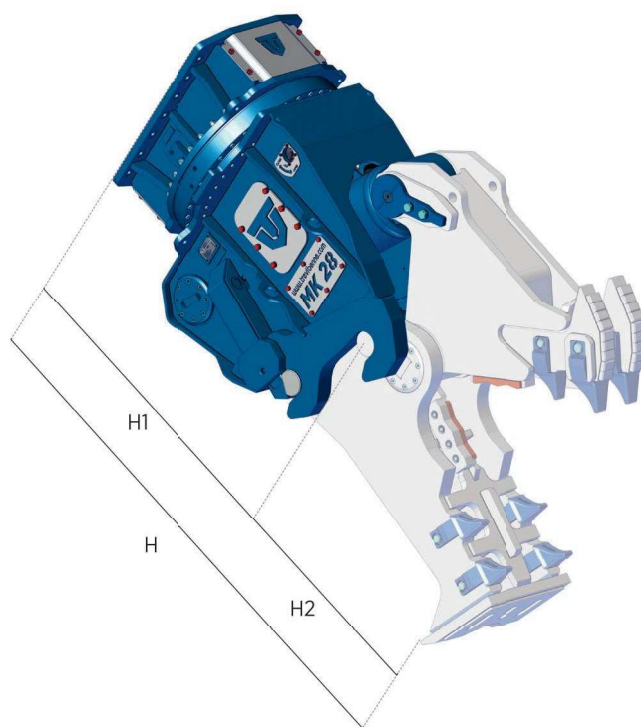
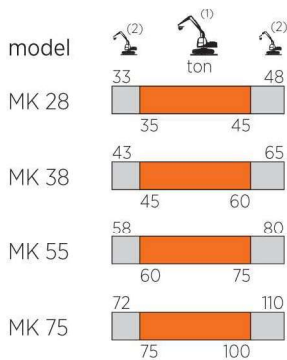
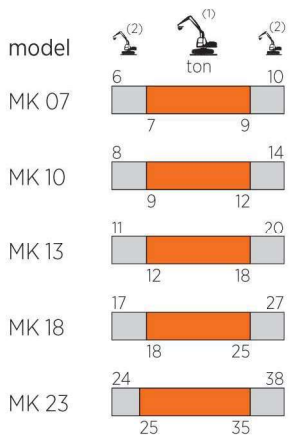
		MK 07	MK 10	MK 13	MK 18	MK 23	MK 28	MK 38	MK 55	MK 75
	kg.	350	450	585	745	1165	1465	1730	2875	3890
A	mm.	495	580	640	760	830	840	950	1015	1160
B	mm.	560	560	700	745	780	810	920	1070	1180
C	mm.	90	100	100	125	135	145	145	200	210
D	mm.	250	290	310	330	370	400	410	510	610
	mm.	250	350	400	415	480	500	500	575	640
H2	mm.	700	800	920	930	1080	1100	1225	1410	1640
	∅ max	mm.	25	30	35	40	45	55	70	85
	IPN max	mm.	/	/	/	/	/	/	/	/
	HEA max	mm.	/	/	/	/	/	/	/	/
	max	mm.	/	/	/	/	/	/	/	/

*Available on request / *Disponibile su richiesta / *Disponible sur demande / *Disponibile a petición / *Verfügbar auf Anfrage



MK SERIES

- MULTI KIT PULVERIZER
- FRANTUMATORE MULTI KIT
- BROYEUR MULTI KIT
- DEMOLEDOR MULTI KIT
- MULTIPROZESSOREN

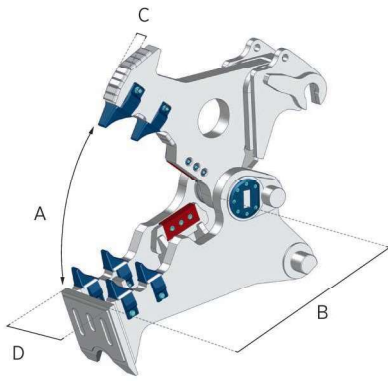


- (1) Optimum excavator-equipment combination
 Accoppiamento escavatore-attrezzatura ottimale
 Couplage pelle-équipement optimal
 Acoplamiento excavadora-implemento optimal
 Optimale Bagger-Ausrüstung Kombination
- (2) Possible excavator-equipment combination
 Accoppiamento escavatore-attrezzatura possibile
 Couplage pelle-équipement possible
 Acoplamiento excavadora-implemento posible
 Mögliche Bagger-Ausrüstung Kombination



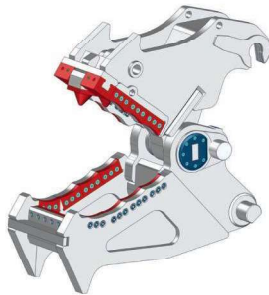
		MK 07 *	MK 10 *	MK 13 *	MK 18	MK 23	MK 28	MK 38	MK 55	MK 75
body	kg.	410	570	795	1225	1465	2020	2180	3550	4920
H1	mm.	810	1000	1055	1220	1330	1375	1375	1580	1710
max	bar	320	320	350	350	350	350	350	350	350
l/min.		80 / 100	150 / 200	180 / 250	180 / 250	200 / 300	250 / 350	300 / 400	400 / 500	400 / 500
max	bar	140	140	140	140	140	140	140	40	140
l/min.		5	15 / 30**	15 / 30**	20 / 40**	20 / 40**	25 / 50**	25 / 50**	25 / 50**	70**
		/	/	/	/	/	/	/	✓	✓

*Mechanical version / *Versione meccanica / *Version mécanique / *Versión mecánica / *Mechanischer Version
 **Double motor / **Doppio motore / **Double moteur / **Doble motor / **Doppelmotor
 H = H1 + H2

KIT HC


		MK 07	MK 10	MK 13	MK 18	MK 23	MK 28	MK 38	MK 55	MK 75
	kg.	250	435	575	685	1055	1415	1805	2865	3715
A	mm.	535	600	680	745	845	850	905	1175	1180
B	mm.	490	610	710	695	770	810	900	1190	1290
C	mm.	90	100	100	125	125	145	145	200	210
D	mm.	240	300	300	340	390	430	460	600	640
	mm.	125	150	200	175	240	230	230	290	320
H2	mm.	690	810	925	880	1040	1100	1220	1495	1455
	∅ max	mm.	20	25	30	35	40	45	60	75
	IPN max	mm.	/	/	/	/	/	/	/	/
	HEA max	mm.	/	/	/	/	/	/	/	/
	max	mm.	/	/	/	/	/	/	/	/

UPDATED **UPDATED**

KIT CH


		MK 07	MK 10	MK 13	MK 18	MK 23	MK 28	MK 38	MK 55	MK 75
	kg.	225	380	610	745	1130	1620	*	*	*
A	mm.	310	390	445	500	565	590	*	*	*
B	mm.	420	470	580	620	665	730	*	*	*
C	mm.	160	185	235	255	335	380	*	*	*
D	mm.	275	320	335	355	455	530	*	*	*
	mm.	340	400	530	510	530	590	*	*	*
H2	mm.	650	755	900	945	1060	1150	*	*	*
	∅ max	mm.	30	35	40	50	55	*	*	*
	IPN max	mm.	/	/	/	/	/	/	/	/
	HEA max	mm.	/	/	/	/	/	/	/	/
	max	mm.	/	/	/	/	/	/	/	/

UPDATED **NEW PRODUCT**

KIT CL


		MK 07	MK 10	MK 13	MK 18	MK 23	MK 28	MK 38	MK 55	MK 75
	kg.	*	*	*	560	1000	1420	1910	2995	*
A	mm.	*	*	*	260	320	340	390	430	*
B	mm.	*	*	*	360	445	515	560	650	*
C	mm.	*	*	*	115	145	155	165	185	*
D	mm.	*	*	*	310	390	440	480	560	*
	mm.	*	*	*	320	400	420	480	560	*
H2	mm.	*	*	*	505	640	755	760	880	*
	∅ max	mm.	/	/	/	/	/	/	/	/
	IPN max	mm.	/	/	/	/	/	/	/	/
	HEA max	mm.	/	/	/	/	/	/	/	/
	max	mm.	*	*	10	12	14	16	18	*

*Available on request / *Disponibile su richiesta / *Disponible sur demande / *Disponibile a petición / *Verfügbar auf Anfrage